

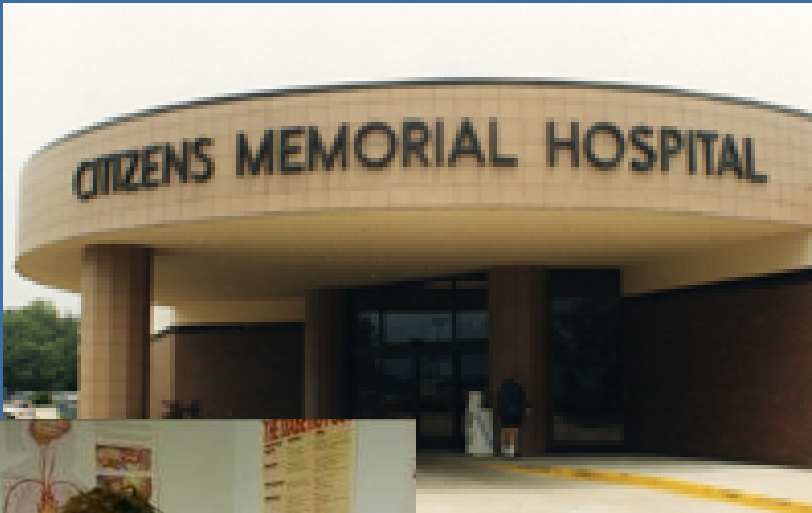
Citizens Memorial Healthcare

Project Infocare
Denni McColm, CIO

Citizens Memorial Healthcare

Citizens Memorial Healthcare

- Rural healthcare network
- Southwest Missouri
- 74 acute beds
- ER-level III trauma center
- 5 LTC facilities-476 beds
- Residential care
- Home care/hospice
- 16 physician offices
- 1,550 employees
- 98 physicians



Project Infocare Vision Statement

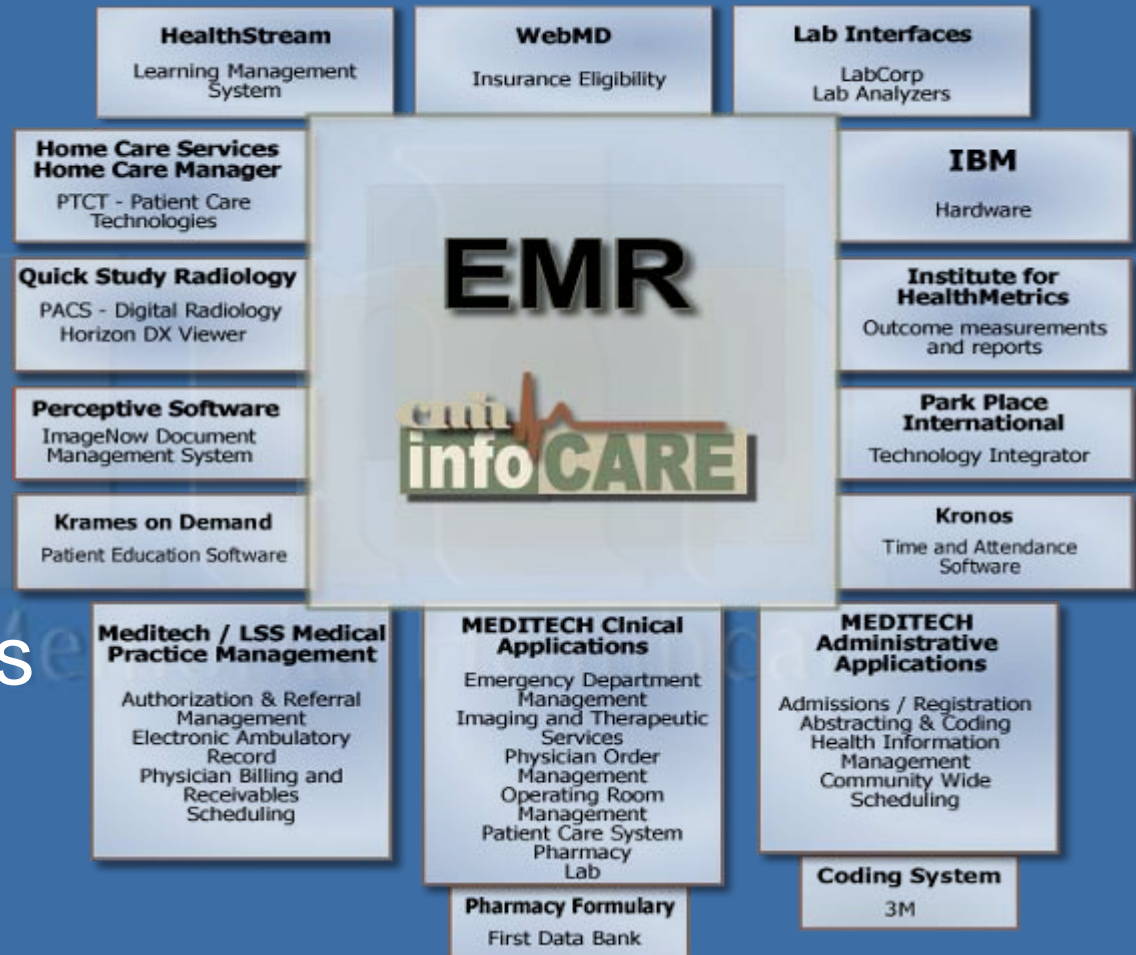
- Enable a patient to enter anywhere into the continuum of care and have a personal identity that is maintained across that continuum



- Physicians and other caregivers will have access to all of that patient's medical information within the healthcare continuum

Project Infocare

- EMR that crosses continuum
- 100% use of CPOE
- No paper charts



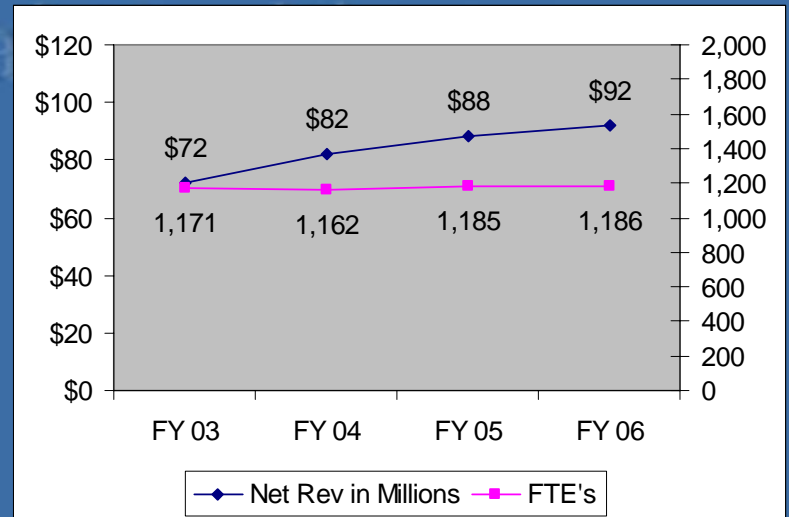
Clinical Benefits

- Information availability
- Clinical decision support



Financial Returns

- ROI
- Net Revenue Increase
- Productivity Gains

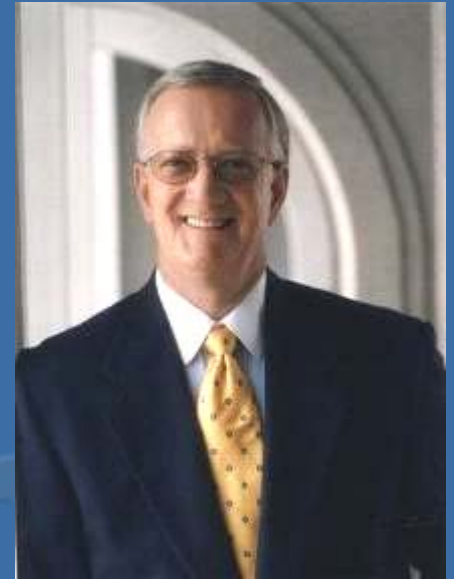


Why has CMH been able to do it?

- Vision
- Resources
- Partnerships
- Determination
- Ignorance



Vision



- Seamless care across the continuum

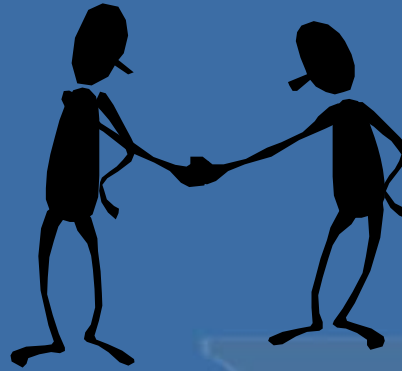


Resources

- One big project
- External financing
- Captured all costs
- Augmented by grants



Partnerships



- Shared vision
- Shared overhead costs

Determination

- Active solicitation of suggestions
- Outside help
- More resources
- Go paperless



Ignorance

- Didn't know it was supposed to be so hard



Questions?

